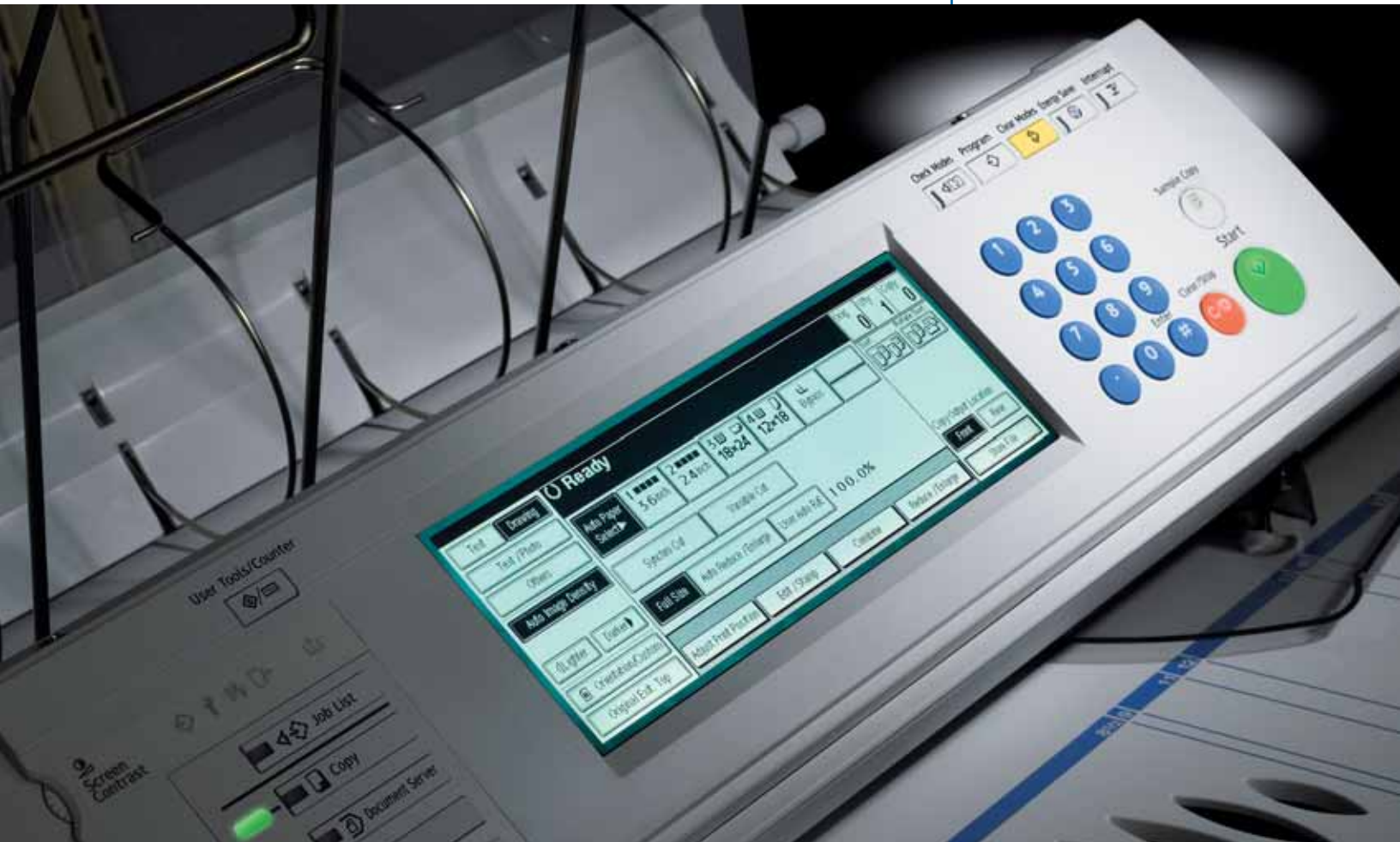


Gestetner

A080

WIDE FORMAT
DIGITAL IMAGING
SYSTEM



A new source of
productivity for
your organization.

Gestetner



Get More Done.

Gestetner Digital Imaging Systems combine the power of network connectivity, with printing and scanning—all from one location.

Based on your specific applications and requirements, we will provide the right solution to boost your productivity, save you money and sharpen your competitive edge.

For further information or a demonstration of this or other Gestetner Digital Imaging Systems, contact your authorized Gestetner dealer.

www.gestetnerusa.com

The Gestetner A080 Wide Format Digital Imaging System. Simpler, faster, better—by a wide margin.

With the Gestetner A080 Wide Format Digital Imaging System, outsourcing your wide format printing or doing it in-house on pen plotters or in dedicated repro areas is obsolete. Printing high-quality wide format documents is now simple and affordable for even small organizations.



The back-lit touch-screen control panel is easy to use.

Accessible, intuitive, easy

The Gestetner A080 was designed to be used by untrained operators who need their work now. It is simple and intuitive to operate, so virtually anyone in your organization can successfully use it on the first try.

- No reaching: Paper drawers, toner and all controls are accessible from the front and easy to reach.
- No confusion over the control panel: The back-lit touch-screen control panel and the hierarchical tool menus were engineered to make operation easy.

- No trouble changing rolls: Changing paper is one of those tasks that everyone tries to avoid. The excuses are over. On the Gestetner A080, changing rolls is quick and easy. There's also a standard two-roll paper tray to double the time between paper changes. And you can add another two-roll drawer—or two cassette trays for cut-sheets to further minimize paper changes.

A080

ONE OF THREE ORIGINAL EXITS

EASY-ACCESS CLAMSHELL DESIGN

MANUAL-FEED BYPASS TABLE

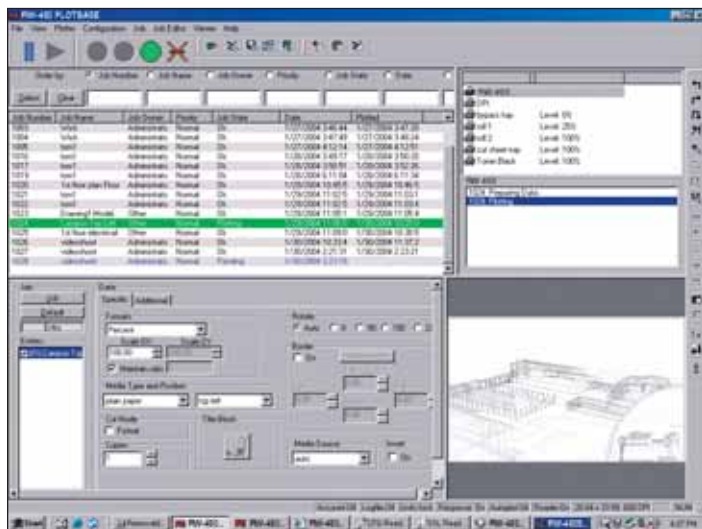
TWO-ROLL PAPER TRAY

BACK-LIT TOUCH-SCREEN CONTROL PANEL

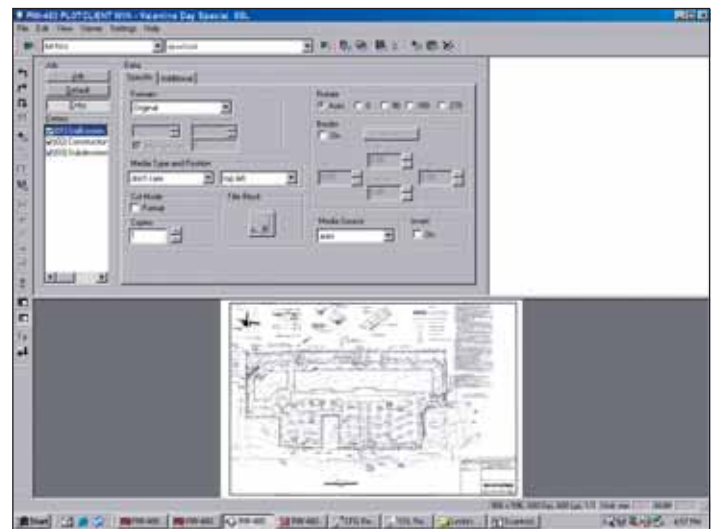
ONE OF TWO OUTPUT EXITS

EASY TO REPLACE TONER CARTRIDGE

PAPER CASSETTE TRAYS (OPTION)
Holds up to 12" x 18" paper.



PLOTBASE: Manages the print queue.



PLOTCLIENT: Interface to create and send print jobs.

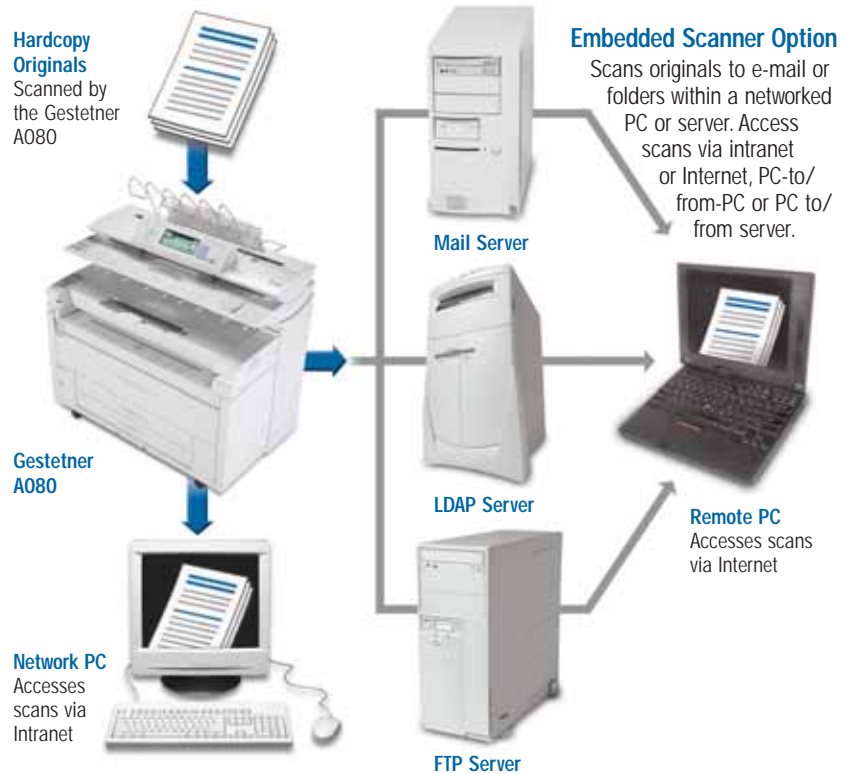
Copy and store

Managing a constant stream of revisions and additions is a challenge for any organization producing wide format documents—a situation that's greatly simplified by having easy access to your originals. The Gestetner A080 features its own internal document server. Able to store up to 80 GBs of data for up to 180 days, the document server provides instant accessibility for your works in progress. There are no originals to search for and no valuable office space needed for document storage. You can also edit, reduce, enlarge or stamp your documents before you store or retrieve them for reprinting. And security is password protected to keep unauthorized users out.

Document distribution in an instant

Is it possible to dramatically cut costs and improve service at the same time? With the embedded scanner on the Gestetner A080 the answer is "yes."

- Scan and distribute your documents anywhere almost instantly with the Gestetner A080's Scan-to-Email capability. Streamline document sharing even further with "LDAP search," which lets you download unlimited recipient names directly from your company's e-mail system or corporate address book.
- Scan directly to a folder on the built-in hard disk with the Scan-to-Folder feature, simplifying document storage and making retrieval as easy as a keystroke. Designated users on your LAN or WAN now have the same easy access to review and update your work as you do.
- Convert your blueprints into high-resolution, black-on-white output by simply selecting "dialo" when you scan your old-style prints. The network TWAIN scanning driver easily solves the problem of bringing your legacy documents into your digital document mainstream.



Security you can trust

At Gestetner, we know that security has become a primary concern at organizations everywhere and have integrated sophisticated technologies to protect your work into the system:

- Windows Authentication ensures that only authorized personnel can access your files. Users must input their names and passwords before they can access the machine.
- Data Encryption prevents attempts to intercept data during transmission by encrypting your data until it's printed out.
- The Data Overwrite System automatically overwrites any "latent images" left on the system hard drive after a job is completed, making efforts to access and reconstruct residual image data virtually impossible.



A080 Wide Format Digital Imaging System

Precision images

The Gestetner A080 also has a special "drawing" category in its list of menu types. This designation allows even greater technical processing of fine lines in your copies.

System management from your desktop

Keep your Gestetner A080 in complete readiness with as little effort as possible. In fact, you can monitor the system over the Web from any networked PC. Check the status of a variety of key features, including general system status, paper and toner levels, job log and address book. You can also assign security levels, define configurations and view and save thumbnails. Result: you can maintain system readiness without being physically at the system.

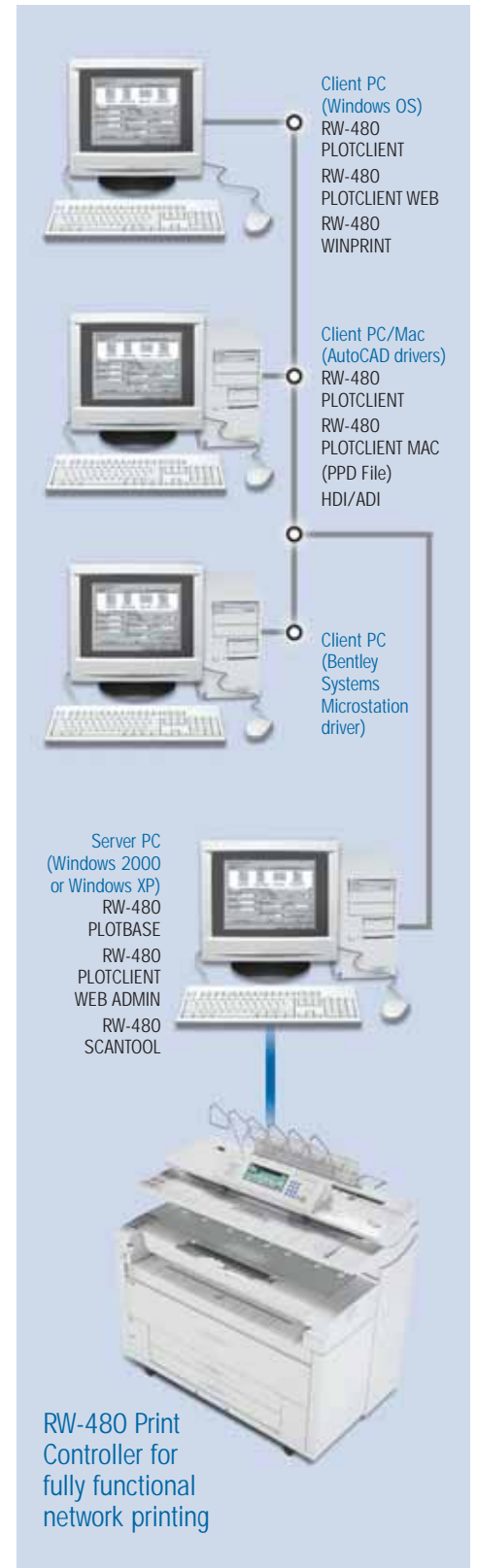
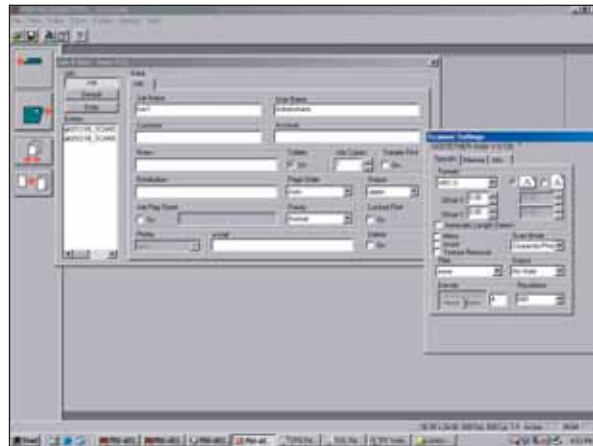
Add the power of the RW-480 Controller

The optional RW-480 Controller with its PLOTBASE and PLOTCLIENT software further extends the power and capabilities of the Gestetner A080:

- Print and scan documents up to 49 feet long.
- Eliminate the need to print on slow, costly inkjet plotters.
- Prioritize print jobs automatically from multiple users across your organization.
- Scan-to-DWF format and print DWF documents without having to use AutoCAD.
- Offer your clients the convenience of transmitting print jobs over the Internet.

Add the SCANTOOL option and you can:

- Scan-to-File for archiving, editing images, merging images or creating sets or multi-page documents.
- Scan-to-PDF with the Postscript™ option.
- Scan-to-DWF with the DWG/DXF/DWF option.



Your Partner In Environmental Solutions

The Gestetner A080 is Energy Star® compliant, continuing our longstanding commitment to developing office solutions with superior energy and supply-saving features, including:

- Quick Start Up (QSU) technology
- Toner recycling
- Power-saving Sleep modes
- Low noise levels
- Duplex and Combine Copy modes
- Minimal ozone emissions



