

**LANIER**

# LD3225/LD3330

DIGITAL IMAGING SYSTEM



*Versatile multifunction capabilities for workgroups*

*These two digital MFPs deliver a powerful combination of flexible functionality, outstanding image quality, strong security, and advanced document distribution*



# Boost your productivity, ensure your security

As business gets more competitive, demands become greater, deadlines get shorter, and the requirements for getting information to your clients and colleagues get more challenging. Introducing the Lanier LD325/LD330 Digital Imaging Systems—the most sophisticated combination of document management and security solutions available today.

With the ability to print and copy at up to 30 ppm at 600 dpi, the Lanier LD325/LD330 Series can easily handle your needs for fast, crisp copies. More than digital copiers, they are network printers, network scanners and advanced technology faxes with comprehensive security features designed to keep your documents and network secure.

## ***Network scanning: bring documents into the digital data stream***

The Lanier LD325/LD330 Series provides all the capabilities you need to turn hard copies into a routine part of your everyday communications.

- Deliver scanned documents directly to e-mail addresses or automatically file them into folders, eliminating the need to detach and save documents manually.
- Minimize IT involvement and access up to five corporate LDAP servers, maximizing the use of your existing company information.
- Choose from a broad range of industry standard formats, including TIFF, TIFF-F, PDF and JPEG.

## ***Taking fax to a whole new level***

The LD325/LD330 Series can handle up to three G3 lines simultaneously and features a 33.6 Kbps modem with standard JBIG compression. Or transform faxing from a paper-based, labor-intensive method to a highly efficient, money-saving means of document distribution with advanced fax technologies.

- Conveniently fax digital documents directly from your PC with LAN fax.
- Forward faxes directly to e-mail, hard disk drive or folder, ensuring that documents are routed properly.
- Cut your long-distance communication costs and bypass your Public Switched Telephone Network with fast, high-quality T.37 Internet or T.38 IP faxing by sending and receiving documents over your LAN or WAN.





Print Jobs				Exit			
Select files:				Details			
All	Per User ID	User ID	Date /Time	File Name	Selected	Select All Jobs	View All
<input type="checkbox"/>	<input type="checkbox"/>	72855	08/17 10:56	RPCS Drivers	<input checked="" type="checkbox"/>		
<input type="checkbox"/>	<input type="checkbox"/>	52899333	08/17 10:54	Budget	<input checked="" type="checkbox"/>		
<input type="checkbox"/>	<input type="checkbox"/>	95988	08/17 10:53	Product Invoice	<input checked="" type="checkbox"/>		
<input type="checkbox"/>	<input type="checkbox"/>						
<input type="checkbox"/>	<input type="checkbox"/>						

1/1

Prev. Next. Print Delete

*Hold/Locked/Stored Print solves the problem of exposing sensitive prints in the output trays to unauthorized personnel; prints can be held at the printer until they're released at the control panel during walk-up.*

### **Powerful network printing**

**Your network is the hub of your organization. And the Lanier LD325/LD330 Series provides the connections and universal compatibility you need to get up and running fast.**

- 10/100 BaseTX Ethernet and USB 2.0 interfaces ensure easy connectivity to your network.
- PCL5e/6 and optional Adobe®Postscript®3™ provide compatibility to both PC and Mac™ platforms.
- PDF Direct Print allows users to send PDF files directly to the printer without opening the Adobe application, resulting in reduced network traffic. Ideal for printing scanned PDFs.

### **Advanced management systems**

**The Lanier LD325/LD330 Series makes your document management responsibilities more efficient, more productive...and much less stressful.**

- Automatically sends an e-mail alert if it detects something out of sync with optimum performance; for example, if it's low on toner.
- Reduce the time required for status checks and programming with Web Image Monitor, which lets you program machine settings and the address book with your Web browser tool.

### **Customize your system, enhance your workflow**

The Lanier LD325/LD330 Series exceeds industry standards with Embedded Software Architecture—an innovative Java (J2ME)-compatible software development platform. Embedded Software Architecture allows for the development of key applications that run on the Lanier LD325/LD330 Series, dramatically enhancing your organization's workflow. The Lanier LD325/LD330 Series can easily be customized to meet your needs by controlling features such as the operation panel, printing, saving files and scanning.

*Providing all the capabilities you need, the Lanier LD325/LD330 makes document management easy and manageable.*



Store up to 3,000 documents in the Document Server. Frequently used documents can be re-printed, re-faxed and re-scanned.

## Manage your electronic documents

Lanier's DocumentMall™ is powerful document management software that is delivered as an on-demand service over the Internet. Seamless integration with the Lanier LD325/LD330 Series allows you to scan hard-copy documents directly to DocumentMall and gives businesses of all sizes the ability to:

- Store business-critical documents in one secure location.
- Manage paper and electronic documents over the Internet from the convenience of a PC.
- Share documents with anyone, anywhere, at anytime.
- Protect documents with state-of-the-art security and facilities.

A flexible and cost-effective solution, DocumentMall addresses a wide range of document management needs—from simple “file and find” applications such as document archiving and disaster readiness, to global sharing and collaboration with employees, partners and customers.

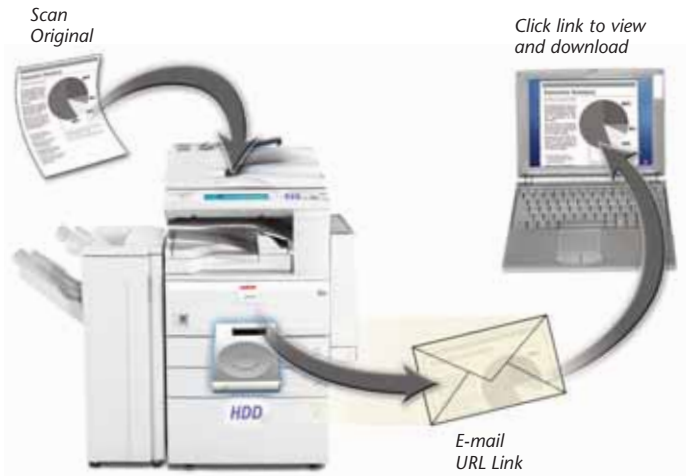
## Security is a priority

The Lanier LD325/LD330 ensures the security of your documents at all points in the document distribution process:

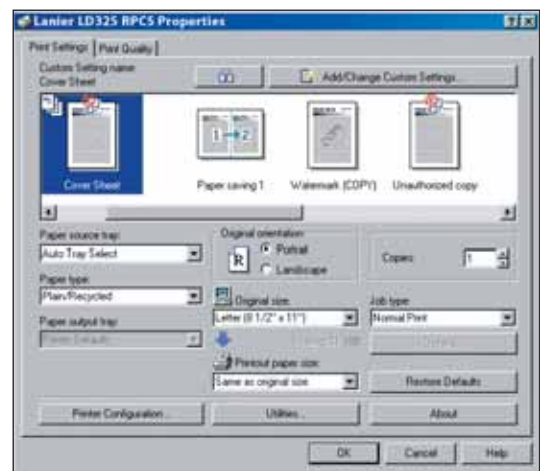
- Windows/LDAP Authentication requires users to input their existing network name and password before being allowed access to the networked device.
- Deter copying of sensitive documents by using Unauthorized Copy Control, a welcome feature in any office that handles confidential documents.
- Restrict unauthorized access by limiting rights to the users by applications.
- DataOverwriteSecurity System solves the problem of “latent images”—images that remain temporarily on the hard drive after a job is copied, printed, scanned or faxed—by automatically overwriting them with random data.



## Scan-To-URL



Scan-to-URL improves information sharing in your organization, while minimizing network traffic.



Simplify even the most complex jobs with our icon-based RPCS (Refined Print Command Stream) driver.

## Your Environmental Partner



Lanier continues its long-standing commitment to developing office solutions with environmentally friendly and superior energy- and supply-saving features, without compromising productivity.

# LD325/LD330

## One-Bin Tray (Option)

Additional One-Bin Output Tray holds up to 125 sheets and lights up when output is present. Automatically separates fax output from copy/print output.

## Finisher (Option)

1,000-Sheet Finisher with 50-sheet staple capacity and 3-position stapler produces professional-looking documents quickly and conveniently. 500-Sheet Finisher also available.

## Paper Tray (Option)

500 x 2, user-adjustable Paper Bank expands capacity to hold up to five different sizes or orientations of paper.

## Document Feeder (Option)

50-Sheet Automatic Reversing Document Feeder enables productive scanning for one or two-sided documents up to 11" x 17".

## Control Panel

Large touch-screen Control Panel is easy to navigate.

## Bypass Tray

100-Sheet Bypass Tray for printing on labels, envelopes or special papers.

## Duplex Unit

Duplex Unit allows unlimited printing of two-sided documents, saving filing space and cutting costs.

## Paper Drawers

Two user-adjustable, 500-Sheet Paper Drawers support paper weights up to 42 lb.—ideal for printing onto labels, envelopes and other materials.

**Select the configuration based on the requirements for your office.**



*For an affordable printing solution with a flexible upgrade path for scanning and faxing.*



*For productive printing and document handling.*



*For total document needs in a space-saving design.*



*For secure document storage, management and distribution via the Internet.*

**LANIER****LD325/LD330****SPECIFICATIONS****ENGINE/COPIER SPECIFICATIONS**

<b>Configuration</b>	Console
<b>Scanning Element</b>	Flatbed with Moving CCD Array Image Sensor
<b>Printing Process</b>	Single Laser Beam Scanning & Electrophotographic printing
<b>Toner</b>	Dry, Dual Component
<b>Document Feeding</b>	Optional 50-sheet ARDF
<b>System Memory (std./max.)</b>	128/384 MB RAM
<b>Hard Disk Drive</b>	40 GB option
<b>Copy Resolution</b>	600 x 600 dpi
<b>Grayscale</b>	256 levels
<b>Exposure Adjustment</b>	Manual & Automatic
<b>Quantity Indicator</b>	Up to 999
<b>Original Type</b>	Book/Sheet
<b>Maximum Original Size</b>	Up to 11" x 17"
<b>Copy Size</b>	5.5" x 8.5" to 11" x 17"
<b>Copy Type</b>	Plain Paper, Transparencies, Envelopes
<b>Warm-up Time</b>	12 seconds
<b>First Copy Speed</b>	4.4 seconds
<b>Continuous Copying Speed</b>	LD325: 25 copies/minute (LTR) LD330: 30 copies/minute (LTR)
<b>Recovery Time</b>	10 seconds (from Auto Off)
<b>Power Source</b>	120V/60Hz/12A
<b>Dimensions</b>	26" (W) x 23" (D) x 28" (H)
<b>Weight</b>	156 lbs.
<b>Standard Paper Capacity</b>	500 sheets x 2 trays, and 100-sheet Bypass Tray
<b>Optional Paper Capacity</b>	500 sheets x 2 trays or 2,000-sheet Large Capacity Tray (LCT)
<b>Paper Size</b>	5.5" x 8.5" to 11" x 17" /A6 to A3
<b>Paper Weight</b>	16 – 28 lb. Bond/60 – 105g/m <sup>2</sup> (Tray 1) 14 – 42 lb. Bond/52 – 157g/m <sup>2</sup> (Tray 2 and Bypass) 17 – 28 lb. Bond/64 – 105g/m <sup>2</sup> (Duplex) 500 sheets (LTR)
<b>Standard Output Tray Capacity</b>	
<b>Reduction Ratios</b>	25%, 50%, 65%, 73%, 78%, 85%, 93%
<b>Enlargement Ratios</b>	121%, 129%, 155%, 200%, 400%
<b>Zoom</b>	25% to 400% in 1% increments
<b>Standard Features</b>	Auto Magnification, Auto Paper Select, Auto Tray Switch, Center/Border Erase, Combine Mode, Cover Insertion, Date Stamp, Directional Magnification, 100% Duplex Productivity, Electronic/ Rotate Sorting, English Pre-Set Stamps, 10 Job Programs, Negative/Positive, OHP Slip Sheet, Page Number Stamp, Paper Designate, Series Copy, Touch- Screen Control Panel, 100 User Codes (optional 500 max.)
<b>Optional Features with HDD</b>	Background Numbering, Booklet/ Magazine Copy, Document Server (3,000 file capacity), Reserve Copy and User Stamps

**PRINTER SPECIFICATIONS (OPTION)**

<b>Print Speed</b>	LD325: 25 ppm LD330: 30 ppm
<b>CPU</b>	RM7035C 466 MHz
<b>Standard Interfaces</b>	10/100BaseTX Ethernet USB 2.0
<b>Optional Interfaces</b>	IEEE 802.11b Wireless LAN Bluetooth IEEE 1284

<b>Memory Capacity</b>	384 MB RAM shared
<b>Network Protocol Utilities</b>	TCP/IP, IPX/SPX, AppleTalk SmartDeviceMonitor, Web SmartDeviceMonitor, DeskTopBinder V2 Lite, Web Image Monitor PCL 5e/6 emulation* Lanier RPCS, Adobe®PostScript®3™ (optional)
<b>Page Description Languages</b>	Up to 600 dpi (2400 x 600 dpi with smoothing)
<b>Print Resolution</b>	256 Levels
<b>Grayscale</b>	35 Intellifonts, 10 TrueType, 1 Bitmap and 13 International fonts
<b>Fonts for PCL 5e/6</b>	136 PostScript Fonts
<b>Fonts for PS3</b>	Windows 9x/NT4.0/2000/ME/XP Server 2003, Netware, Unix; Sun Solaris, HP-UX, SCO OpenServer, Red Hat Linux, IBM AIX, MAC 8.6-9.2x, 10.1+, SAP R/3, NDPS Gateway, IBM iSeries/AS/400® using OS/400 Host Print Transform Form Overlay, Watermarks, Spool Printing, Encryption, Sample/Locked/ Hold/Store Print*
<b>Network Operating Systems</b>	
<b>Standard Features</b>	

**SCANNER SPECIFICATIONS (OPTION)**

<b>Scanning Speed</b>	Embedded Scanning: 52 ipm (@ 200 dpi)
<b>Scanning Resolution</b>	600 dpi
<b>Grayscale</b>	256 Levels
<b>Scan Area</b>	Up to 11" x 17"
<b>Interface (standard)</b>	10/100BaseTX Ethernet
<b>Interface (optional)</b>	IEEE 802.11b Wireless LAN
<b>Protocol</b>	TCP/IP, NCP, SMB, SMTP, POP 3, IPX, LDAP, FTP, SNMP
<b>Memory Capacity</b>	384 MB RAM shared
<b>File Types</b>	Single page TIFF/JPEG/PDF, Multi-page TIFF/PDF
<b>Standard Features</b>	Embedded Scan-to-Email/HDD/Folder/ URL and TWAIN

**FAX SPECIFICATIONS (OPTION)**

<b>Circuit</b>	PSTN, PBX
<b>Compatibility</b>	ITU-T G3
<b>Resolution</b>	200 x 200/100 dpi 400 x 400 dpi (Optional)
<b>Compression Method</b>	MH, MR, MMR, JBIG
<b>Scanning Speed</b>	0.40 seconds (LEF)
<b>Modem Speed</b>	33.6 Kbps with Auto Fallback
<b>Transmission Speed</b>	G3: 3 seconds per page (MMR Compression) G3: 2 seconds per page (JBIG Compression)
<b>Memory</b>	4 MB standard/28 MB maximum 320 pages/2,240 pages 500/2,000
<b>Std/Max Auto Dials</b>	100 (max. 500 numbers per group)
<b>Group Dials</b>	
<b>ID Code Programming</b>	4 digits
<b>User Function Key</b>	3 keys
<b>Standard Features</b>	Auto Document (6), Book Transmission, Dual Access, Duplex Reception, Image Rotation, 1 Hour Backup Simultaneous Operation of up to 3 Lines (G3 x 3); LAN-Fax Capability, Internet Faxing (T.37), IP Faxing (T.38) Fax Forwarding to E-Mail/ HDD/Folder with Scan/Print installed
<b>Optional Features</b>	

**PS490 PAPER BANK (OPTION)**

<b>Paper Size</b>	5.5" x 8.5" to 11" x 17" /A5 to A3
<b>Paper Weight</b>	16 to 28 lb. Bond/60 to 105g/m <sup>2</sup>
<b>Paper Capacity</b>	2 x 500-sheets
<b>Dimensions</b>	21.7" (W) x 20.5" (D) x 10.7" (H)

**LARGE CAPACITY TRAY PS500 (OPTION)**

<b>Paper Size</b>	8.5" x 11" /A4
<b>Paper Weight</b>	16 to 28 lb. Bond/60 to 105g/m <sup>2</sup>
<b>Paper Capacity</b>	2,000 sheets
<b>Dimensions</b>	21.7" (W) x 20.5" (D) x 10.7" (H)

**ONE-BIN TRAY PT280 (OPTION)**

<b>Paper Size</b>	5.5" x 8.5" to 11" x 17" /A5 to A3
<b>Paper Weight</b>	16 to 28 lb. Bond/60 to 105g/m <sup>2</sup>
<b>Paper Capacity</b>	125 sheets

**SR790 FINISHER (OPTION)**

<b>Paper Size</b>	5.5" x 8.5" to 11" x 17" /A6 to A3
<b>Paper Weight</b>	16 to 42 lb. Bond/60 to 157g/m <sup>2</sup>
<b>Stack Capacity</b>	Proof Tray: 250 sheets (8.5" x 11" or smaller) 50 sheets (8.5" x 14" or larger) Shift Tray: 1,000 sheets (8.5" x 11" or smaller) 500 sheets (8.5" x 14" or larger)
<b>Staple Capacity</b>	50 sheets (8.5" x 11") 30 sheets (8.5" x 14" or larger)
<b>Staple Position</b>	3 positions (1 staple/2 positions; 2 staples/1 position)
<b>Dimensions</b>	20.7" (W) x 20.5" (D) x 31.1" (H)

**SR820 FINISHER (OPTION)**

<b>Paper Size</b>	7.25" x 10.5" to 11" x 17" /A3 to B5 LEF
<b>Paper Weight</b>	16 to 34 lb. Bond/60 to 128g/m <sup>2</sup>
<b>Stack Capacity</b>	500 sheets
<b>Staple Capacity</b>	30 sheets (8.5" x 11") 20 sheets (8.5" x 14" or larger)
<b>Staple Position</b>	1 position
<b>Dimensions</b>	13.8" (W) x 19.3" (D) x 9.1" (H)

**ADDITIONAL OPTIONS**

<b>ARDF DF83 (50 sheet)</b>	Hard Disk Drive Type 3030
<b>Platen Cover Type 1018</b>	Adobe®PostScript®3™ Type 3010
<b>FAC20 Cabinet</b>	Bridge Unit Type 1027
<b>Printer/Scanner Kit Type 3010</b>	Internal Shift Sort Tray Type 1027 Key Counter Bracket Type 1027
<b>Fax Type 3030</b>	User Account Enhancement Kit Type E
<b>G3 Interface Type 3030</b>	File Format Converter Type B
<b>32 MB Fax Memory</b>	DataOverwriteSecurity Unit Type D
<b>Handset Type 1018</b>	Copy Data Security Unit Type A
<b>IEEE 1284 Type A</b>	Bluetooth Interface Type 3245
<b>IEEE 802.11b Type H</b>	Network Enhancement Kit Type 3010P VM Card Type B

Print speed may be affected by network, application or PC performance. Specifications and external appearances are subject to change without notice. Products are shown with optional features.  
\*Option for LD325p/LD330p configurations.

www.lanier.com

Lanier Five Dedrick Place, West Caldwell, NJ 07006

©2007 Lanier is a registered trademark of Ricoh Americas Corporation. All rights reserved. Windows® and Windows® 95/98/Me/NT4.0/2000/XP are registered trademarks of Microsoft Corporation. Macintosh®, Mac® OS and AppleTalk® are registered trademarks of Apple Computer, Inc. Adobe® and PostScript® are registered trademarks of Adobe Systems, Inc. PCL® is a registered trademark of Hewlett-Packard Company. RPCS™ is a trademark of Ricoh Company, Ltd. All other trademarks are the property of their respective owners.

Printed in U.S.A. on recycled paper.

documentmall



Bluetooth



@Remote



L2367